

THE FRIEDRICH WILHELM HEYM shotgun, model 55 F #55109, pictured here, is a very unusual gun. It is a one-of-a-kind gun, and represents a new era by a gun-maker with a reputation for making fine sporting arms extending back many generations. This shotgun is in 28 gauge.

For the past number of years, several old line gun makers have found it necessary to alter and limit their production of gauges and calibers, in an effort to combat the constantly rising costs brought about by inflation. The result has been that the fancier of the sub-gauge shotgun has found that the 28 gauge and the .410 gauge have been eliminated almost totally from

the lines of makers who did, at one time, make these gauges. Heym believes, as I do, that there are many sportsmen who would still like to own a finely made, quality shotgun in a sub-gauge.

As the photograph of the overall gun illustrates, it is an over under, and in the English stock style. This has become a very popular style, and leans to the classic field gun of years past. Additionally, the straight grip does save a bit of weight, although the gun will be available in the future with their standard pistol grip. Stock length is 14¼", nice and full, with a comb of 1½" X 2" at the heel, featuring a full width comb, getting away from the razor-back combs of past European

designs, giving the illusion of a full stock and a man's, not a boy's gun.

The forend is just the right length for a field or a skeet gun for all but the longest armed shooter, and is full to fill the hand without being bulky or clubby. It is of one piece construction with the customary fore latch as seen on most guns of this day.

Wood quality, color and beauty of grain, is always good on a Heym gun. Wood that appears as having come from a fence-post on the lower forty, never appears on a Heym. The finish is true oil, in a filled and rubbed texture, which denotes quality, and attention to detail. No sprayed-on gloss finish here.

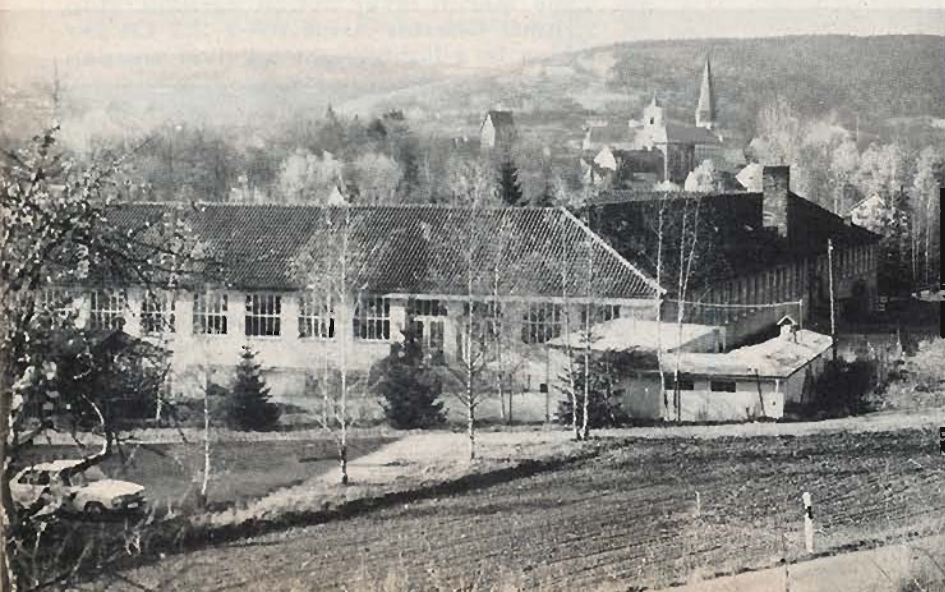
The true aficionado will wish the

SUB-GAUGE MASTERPIECE



Heym re-introduces a
"best" 28 gauge — Model 55 F

Munnerstadt, West Germany, is the location of Heym's small factory.



double triggers which are standard on all Heym guns. However, for those who desire, as an option, a single selective trigger will be available on guns sold in the US. This is a patented trigger, and most reliable.

The gun comes standard with ventilated rib, which is very sturdy, and of the bottom rib type, with the lower section attached full length to the top barrel. It should be noted that the rib is flat on top, and the sides are square and flat, without humps and bumps, which in itself, is an accomplishment in this day and age. The rib has a gold type front sight, and can be supplied with either a gold, silver or ivory center bead if desired.

Continued on page 61

grain HP, most of my manipulations ran from 1.090 to 1.150 inches.

With SR-7625, I never did find anything that outshot 5.0 grains with the bullet seated to 1.090 inches. In my Browning, however, it did not punch symmetrical groups; there would always be a wild one or two. Yet, anyone just beginning to work up loads for the 9mmP should try it. The load is promising, and there is no telling what it can do in another pistol. Heating it up to 5.2/SR-7625 spoiled groups significantly.

I ranged from 5.8/HS-5 to 6.2/HS-5, and after the dust had settled I knew that the original charge of 6.1/HS-5 was still my most accurate load. But I also learned that CCI 550 primers, which are small pistol magnum primers, produced more symmetrical groups than did the standard-force 500's, which occasionally felt a bullet low to open an otherwise 1½-inch group to 2½-3 inches. The magnum cap apparently generated more uniform ignition and combustion. For whatever reason, my Browning liked the overall loaded length of 1.090 to 1.100 inches best with the 115 Sierra; anything longer or shorter tended to pitch bigger groups, although not disastrously so.

When I shoot steadily from a solid

rest with 6.1/HS-5/115 Sierra and the CCI 550 primer, I can punch 5-shot groups of 1½-2 inches. When I tried that load yesterday using a two hand hold and firing rapidly, I made a 2¼-inch five-shot cluster at twenty strides. But when I switch back to random reloads, I'm lucky to hold a four to five inch group. Thus, trial-and error load development work alone can work improved accuracy into a stock semi-auto.

Through the years, I have always felt that the 9mmP was a more accurate case than most people believed. Being small, many of its powder charges filled or nearly filled the case, while primer flashes didn't have to travel far to affect the upper powder layers; and both such features have always prompted uniform ignition, which in turn helps accuracy when the load is right. Perhaps most handgunners have simply sold the 9mmP short by not working up enough trial loads!



ing system, with underlugs fitted properly and snugly into recesses in the receiver. It is worth noting that the hinge pin in this type of action only hinges the barrels open and closed, no firing pressure is transmitted to the hinge pin. This results in a "bank vault" type of locking system, which is so strong that without any alteration whatever, rifle barrels of .458 Winchester Magnum are available fitted to this same action.

Engraving on this action is exceptional. This is the standard factory engraving, and is a game scene pattern. Nicely executed with the birds looking like the birds that they are supposed to look like, and not seagulls or owls. It should be noted that Heym engraving is hand done, old fashioned, and not machine engraving, or etched and "cleaned up," as so frequently seen. To have this quality and coverage of engraving done separately would cost more than just a small portion of the cost of this gun with the engraving as standard.

Safety is in the customary place on the top tang, and is non-automatic. For my money, I believe this to be the best type of safety, as the shooter knows precisely whether the gun is on "safe" or it is not. As well, on the top tang, are included signal pegs, which,

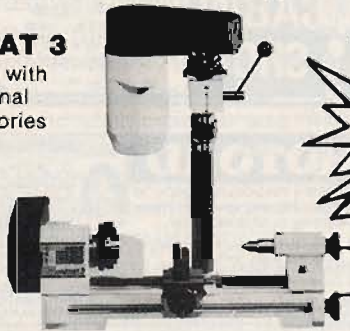
Heym 55F

Continued from page 25

Action is the classic over under Kirsten double barrel extension lock-

Precision Machine Tool Systems to turn your ideas into reality!

UNIMAT 3
Shown with optional accessories



A precision machining system for small work in metal, wood, and plastic. With optional accessories the basic lathe capabilities can be expanded to include thread cutting, drilling, milling, grinding, polishing, coving, grooving, and sawing. The Unimat 3 is truly a universal machine tool. The basic lathe is \$375.00.

- Swing Over Bed 3.6" (92mm)
- Between Centers 8" (200mm)
- Spindle Speeds .. 8 (130-4000 RPM)
- Drive Unit 1/8 H.P. (95 W)
- Weight 15.4 lbs. (7 kg)

COMPACT 5
Shown with optional accessories



For the more demanding hobbyist or professional, the Compact 5 lathe is designed with the precision and accuracy of larger industrial lathes. The cast bed is extremely resistant to vibration and twist. With optional accessories the Compact 5 also converts to a universal machine tool with the added capabilities of thread cutting, milling, drilling, gear cutting, and vertical boring. The basic lathe is \$795.00.

- Swing Over Bed ... 5.12" (130mm)
- Between Centers .. 13.78" (350mm)
- Spindle Speeds .. 6 (250-2800 RPM)
- Drive Unit 2/3 H.P. (500 W)
- Weight 44 lbs. (20 kg)



EMCO-LUX CORPORATION

Call or write today for **FREE** descriptive brochures. 2050 Fairwood Avenue Columbus, Ohio 43207 (614) 445-8328

I-DENT-A
RELOAD MARKER
\$24.95 Order Direct or Write
Plus \$1.00 for Shipping Satisfaction Guaranteed

EDMISTEN CO., INC.
Dept. GM, Box 1293, Boone, NC 28607

Need New ID ... Credit?

Start life over! Here's how:
Change your name/age • Cover past
Disappear Perfectly • Beat the bill collector
Get degrees, better jobs • "AAA" credit, credit cards too!

YES! IT CAN BE DONE!

Write: **EDEN PRESS, INC.** • 11623 Slater, #C
Box 8410-GN, Fountain Valley, CA 92708

NEW! GIANT 11" LOCKBLADE SPORTSKNIFE
— \$9.99

"GOLDEN RAJAH" ... is Bigger and Better! Designed for all Heavy Duty Outdoor Chores. The Razor-sharp 5" Cutlery Steel Blade locks firmly in open position. Rugged, Reliable Construction. Brass bolsters; Brass liners; Buffalo Horn handles. Overall Length 11" Size closed 6" Satisfaction Guaranteed. Send M.O. or Check. \$9.99 add \$1.00 Postage. FREE KNIFE CATALOG. LFN COMPANY Box GSN-101 Brooklyn, N.Y. 11214

JANTZ

SIDE SWING SAFETY



for Mausers, Remington 700s and Springfields.

Straddle trigger guards and other accessories brochure. \$1.00

(405) 622-3790

KEN JANTZ METALSMITHING
Rt. 1-G, Sulpher, Oklahoma 73086

12, 16 or 20-GAUGE EXPANDING DENT PLUGS

Makes removing dents in shotgun barrels easy. Use our one bronze expanding plug instead of several expensive solid ones. Won't mar or jam bore. Center dia. is about .020" less than standard dia. of corresponding bore.

NEW GUNSMITH CATALOG \$2.00

FRANK MITTERMEIER, INC. (Est. 1936)
Dept. G-282 3577 East Tremont Avenue, New York, 10465

\$9.50 Plus \$1. Postage
Only \$28 Set of 3 (12, 16, 20)...

18 Caliber Actually Shoots KEY GUN

A beautiful collector's item. Complete Kit—Easily assembled includes: Quality machined brass key assembly, investment cast steel hammer and trigger. Full instructions. Free information.

Fernwood Gun Supply, Inc.
1341 Camino Tassajara, Dept. G-282, Danville, CA 94526

\$24.00 AS 10 CALIBER

PAK-TOOL LIGHTWEIGHT, COMPACT CARTRIDGE LOADING TOOL

U.S. Pat. No. 3,049,044
\$49.50 complete
FOR RIFLE CARTRIDGES
Completely portable. Load at home, on range or field. Neck sizes and expands on stroke of handle. Loads all rifle cartridges from 458 to 22 Hornet. Full length sizes pistol cartridges. Pistol dies made in 3 die sets. Ask for folder. Send S.A.S.E.



W. H. ENGLISH 206-932-7345
4411 S.W. 100th (GM), Seattle, Wash. 98146

when the gun is cocked and ready to fire, raise out of the receiver, and can be easily felt without actually looking down, or breaking open the gun to be assured that it is cocked.

Signal pegs are not common to most guns used in the US, but once a shooter has the opportunity to experience field shooting with a gun equipped with signal pegs, he will find it unhandy to get along with a gun without them.

Of note are the automatic ejectors. I have always marveled at the force at which a fired shell is smartly ejected from one of these actions. No tired, half-way measures! And, to those who don't like their shells forcefully tossed out of the way, the ejectors can be adjusted so that they almost pick the shells out of the chamber and hand them to you. What more could you ask?

Chequering is the kind that one sees very little, any more. It is sharp, precise, and the diamonds are pointed up all the way to the edge. Pattern is 18 lines per inch at a 1 1/2 to 1 diamond ratio. Some shooters might not like these nice, sharp diamonds, and will want to dull them down a bit with fine sand paper, but it has been some time since I have seen any but custom chequering done this way ... sharp, and classically correct.

Information on Heym guns in the USA available from Jenkins Imports Corp., 462 Stanford Pl., Santa Barbara, CA. 93111. Heym guns are made by Friedrich Wilh. Heym, GmbH; Munnerstadt, W. Germany.

Combat Combos

Continued from page 28

I usually pair up my Uzi with my Browning Double Action 9mm or my Devel customized Smith and Wesson Model 59. The Uzi fits nicely in a standard brief case and usually accompanies me when I accept off-duty employment. These two weapons are primarily not for hunting usage but they can take small game.

In .45 ACP there are two carbines which can be mated to your 1911A1 Colt, Star, Detonics, or Smith and Wesson Model 25. The first is again the Commando Arms Mark .45 which is the same weapon as described previously except chambered in the more potent .45 ACP. The second carbine is another Thompson-type manufac-

WANTED
DEALERS & GUNSMITHS TO DEMONSTRATE AND SELL THE SENSATIONAL BONANZA RELOADING TOOLS FOR METALLIC CARTRIDGES
BONANZA MFG. CO.
412 Western Ave. (D-15) • Faribault, MN 55021

E-Z LOADER™

STOP FUMBLING when loading your 22 rifle's tubular magazine. E-Z Loader holds 6 full loads that are effortlessly injected into your rifle in an instant. Money back guarantee. Just specify magazine capacity in # of 22LR cartridges and a customized E-Z Loader will be rushed to you.

DEL REY PRODUCTS, LTD., DEPT. G
P.O. Box 91561, Los Angeles, CA 90009

• THOUSANDS IN USE
• SATISFACTION GUARANTEED
\$19.95 postpaid

NAZI-Collectors M-43 Stvie Black S-S Caps. Only \$18.00 Postpaid. Order your size NOW. Our 224-page fully illustrated catalog only \$3.00 (free with order).

OVER 40,000 Items in Stock
W.W. #2 Ltd. (G) Box #2063
St. Louis, MO. 63158

W.C. STRUTZ
QUALITY RIFLE BARRELS

Suitable actions barrelled using Douglas blanks, round, octagon or integral ribbed octagon. Over 150 calibers.

ACCURACY GUARANTEED
Literature \$1.00

W.C. STRUTZ RIFLE BARRELS, INC.
P.O. Box 611, Eagle River, WI 54521

Bob Schrimsher's Send \$2.00 For 38 pg. Catalog!

CUSTOM KNIFEMAKER'S SUPPLY
Post Office Box 308-GM
EMORY, TEXAS 75440

LOG CABIN SHOP

Most complete "one stop" muzzleloading line for advanced or beginners.

BIG, NEW CATALOG
No. 37... \$3.00
Outside U.S.A. ... \$4.00
P.O. Box 275 A
Lodi, Ohio 44254
Dealers inquiries invited

PHOTO ID IDENTIFICATION

* IMPRESSIVE * FULL-COLOR PLASTIC ID
* ONE-PIECE CARD (No "Glued-on" Photo)
* YES! POSITIVE ID GETS RESULTS!

TO ORDER SEND: 1. Name, Address, Sex, Height, Weight, Color Hair, Eyes, Birthdate. 2. Small photo (passport-type O.K.). 3. Correct payment.

\$6 2 OR MORE \$5 EACH

* LEGAL TO POSSESS * 24 HOUR SERVICE * 100% GUARANTEED

EDEN PRESS • 11623 Slater "C"
Box 8410-GD • Fountain Valley, CA 92708

WE NEED MORE SHOOTING SPORT ENTHUSIASTS ON OUR SIDE.

SHARE
YOUR COPY OF GUNS MAGAZINE WITH A FRIEND.

Maybe they'll get their own copy, by using the enclosed subscription card.